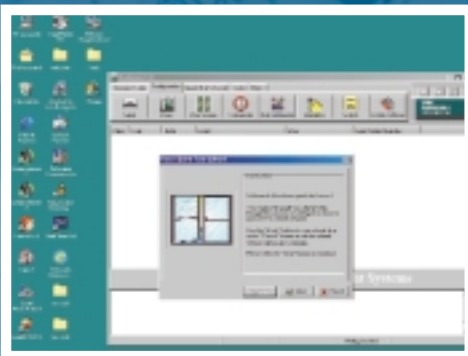


NAVIGATOR

MULTI-DOOR ACCESS CONTROL SOFTWARE

NAVIGATOR
Lite

NAVIGATOR
Pro



TWO POWERFUL WINDOWS™
PACKAGES - CHOOSE THE ONE
THAT SUITS YOU!

NAVIGATOR P.C. SOFTWARE...

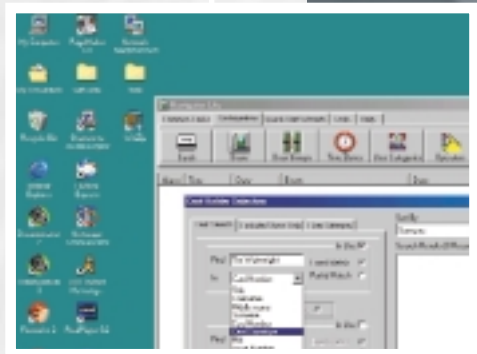
available in *Lite* and *Pro* versions

Navigator Lite is a low cost package which supports small to medium size systems for up to 10 doors and 5,000 cards or token holders. It is simple to create and manage powerful control of who goes where and when. Full historical analysis is provided. The User Group feature makes life really simple for speedy addition or deletion of access tokens.

Navigator Pro supports medium to large size systems of up to 75 doors and 100,000 users with complete alarm management software. Pro also supports Guard Tours. There is even ProPlus DOS for very large systems of up to 400 doors.

Secure ... monitoring of the network to the SI door controllers and their settings ensures system integrity. You can even reprogramme the door controllers with NAVIGATOR.

Remote sites can be connected via modems or Wide Area Networks bringing all access control management to one central point of operation. Doors may then be monitored and remotely controlled.



JOHN
WAINWRIGHT
SYSTEMS LTD

NAVIGATOR NETWORK SOFTWARE

specification



DOORS

UP TO 10

UP TO 75

ALARMS

Doors left/forced open
Door controller tamper
Mains failures
Fire alarm interface

As LITE but including alarm modules with 8 inputs/ outputs and programmable cause/effect software

USER GROUPS

10, each containing a choice of doors and time limits

100 groups

TIME ZONES

10, each having multiple active periods per day for any number of days per week these may be used to restrict access or give free access times

100 time zones

USERS

5,000 may be restricted by time zones, doors, number of uses, start and finish dates

Up to 100,000 and controlled as LITE

USER DATA FIELDS

12

12

AUXILIARY OUTPUT

Each S1 door controller has one programmable auxiliary output in addition to the lock output

As LITE but plus up to 50 8 way input/output modules which sit on the network

REVIEW FACILITY

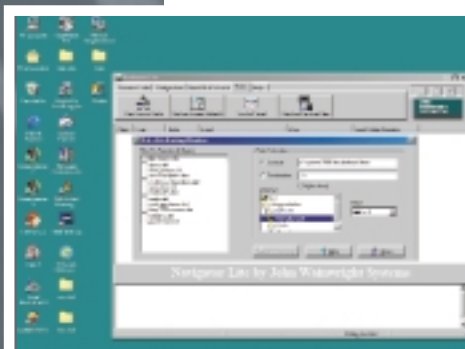
All system and user events are logged and reports may be created

As LITE but includes GUARD Tour reports

PC SPECIFICATION

Pentium class processor, running at 400Mhz. 32Mb RAM (64 Mb pref.) 15" monitor, 4GB H.D.D, SVGA card running at 800 x 600 x 256 colours, sound optional, PS/2 mouse, minimum 1 free serial port
Windows 9X operating system
CD ROM

As LITE but preferable with 17" monitor



John Wainwright Systems Limited, Westfield Trading Estate, Midsomer Norton, Bath BA3 4XE

TELEPHONE 01761 414700

FAX 01761 414722

email sales@jwsltd.demon.co.uk

website <http://www.jwsltd.demon.co.uk>

JOHN
WAINWRIGHT
SYSTEMS LTD